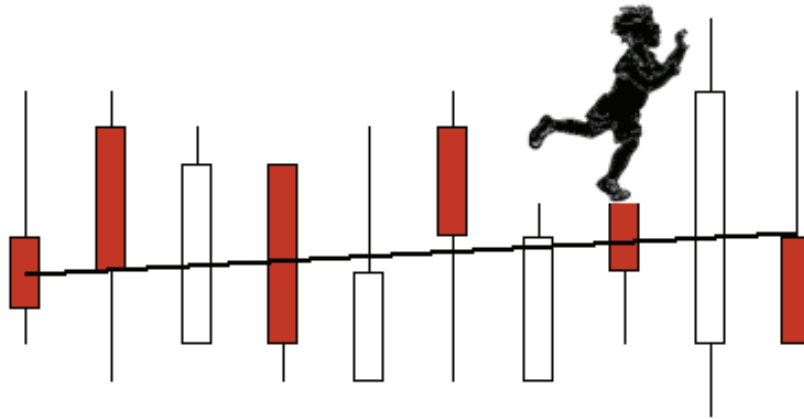


# Utah

Department of Human Services

## CHILD AND FAMILY SERVICES



**Quarterly Report ~ Demographic Data**

**1st Quarter FY10**

Prepared by: The State Office Data Unit

# Descriptive Information

Descriptive information about the cases and population currently served by Child and Family Services is included for monitoring trends or changes regarding our clients or services. Additionally we have included information regarding our providers.

Please be aware as you review the information in this report, that the percentages of rural regions may fluctuate in a broader range as they are influenced by a small number of cases.

## **CPS Information**

Percent of Unaccepted versus Total Referrals.....	3
Number of New CPS Investigations by Quarter.....	4
Percent of CPS Investigations Supported.....	5
Percent of Supported Allegation Types .....	6
Percent of Supported Victims Receiving Out-of-Home Services.....	7
Percent of Supported Victims Receiving In-HomeServices.....	8

## **Removal Information**

Number of Removals.....	9
Number of Removals with Substance Abuse Contributing Factor.....	10

## **In-Home Information**

Number of Home-based Cases Open Point-in-Time.....	11
In-Home Cases by case type.....	12

## **Domestic Violence Information**

Shelter Clients and Episodes.....	13
DVS Cases by Primary Reason.....	14

## **Foster Care Information**

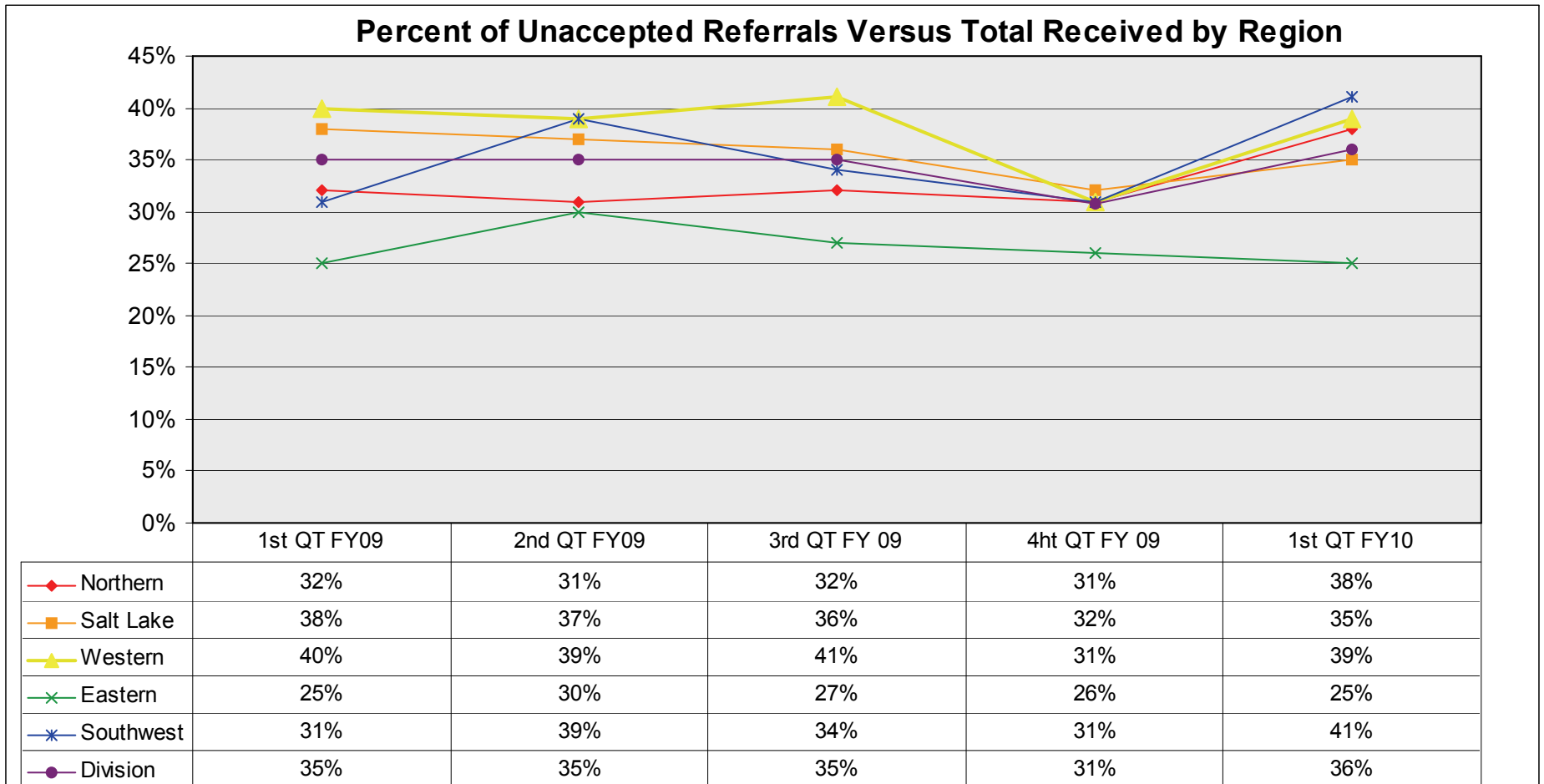
Number of Foster Care Cases Open Point-in-Time.....	15
Average Months in Care by Goal on Closed Cases.....	16
Average Months in Care by Goal on Open Cases.....	17
Ethnicity of Foster Children.....	18

## **Provider Information**

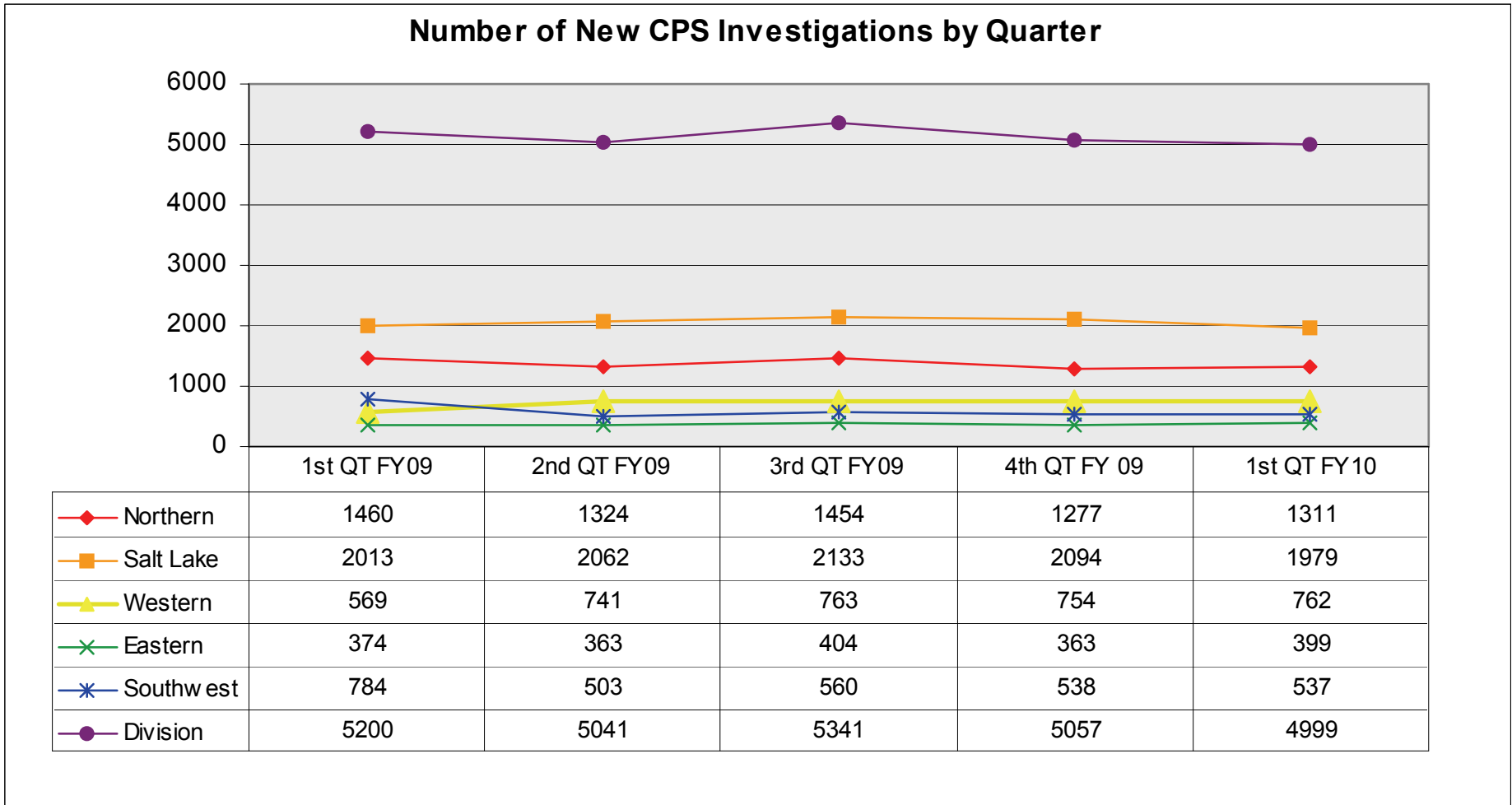
Number of Resource Families.....	19
Ethnicity of LFC, LSC, UFC, PFC Providers.....	20

## CPS Information

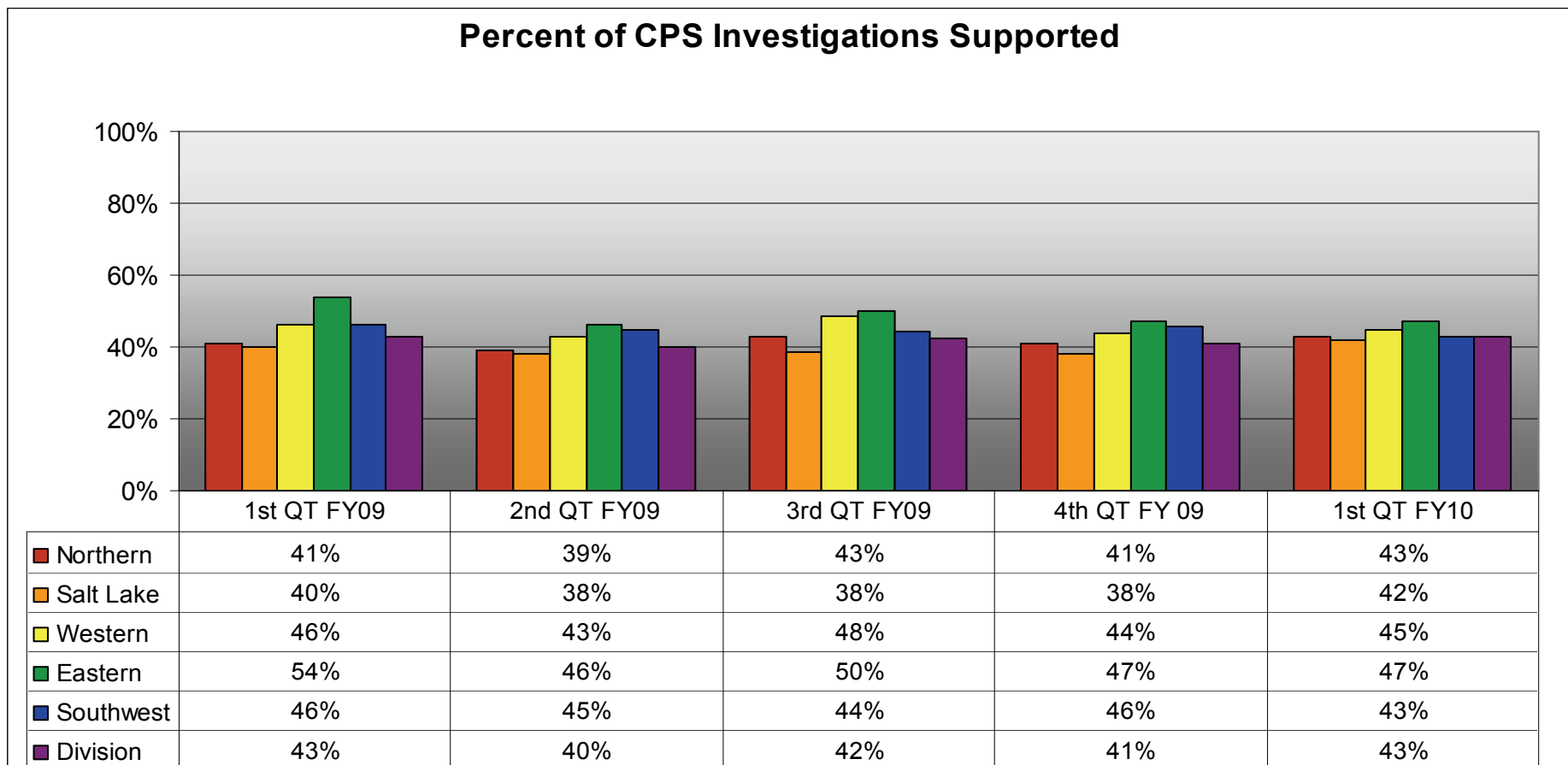
The data in the chart below show the percentage of unaccepted referrals out of all calls that Intake enters into SAFE. Calls entered into SAFE are categorized as accepted, unaccepted, reversal to unaccepted, additional information and information only. Calls coded as additional information or information only are not included in the total number of referrals. Reversal to unaccepted and unaccepted referrals are both counted for the total number of unaccepted referrals. Before determination of an unaccepted referral is made, policy and procedures are followed, including staffing the decision and documentation of the decision and required actions. This report pulls information based on system entry date.



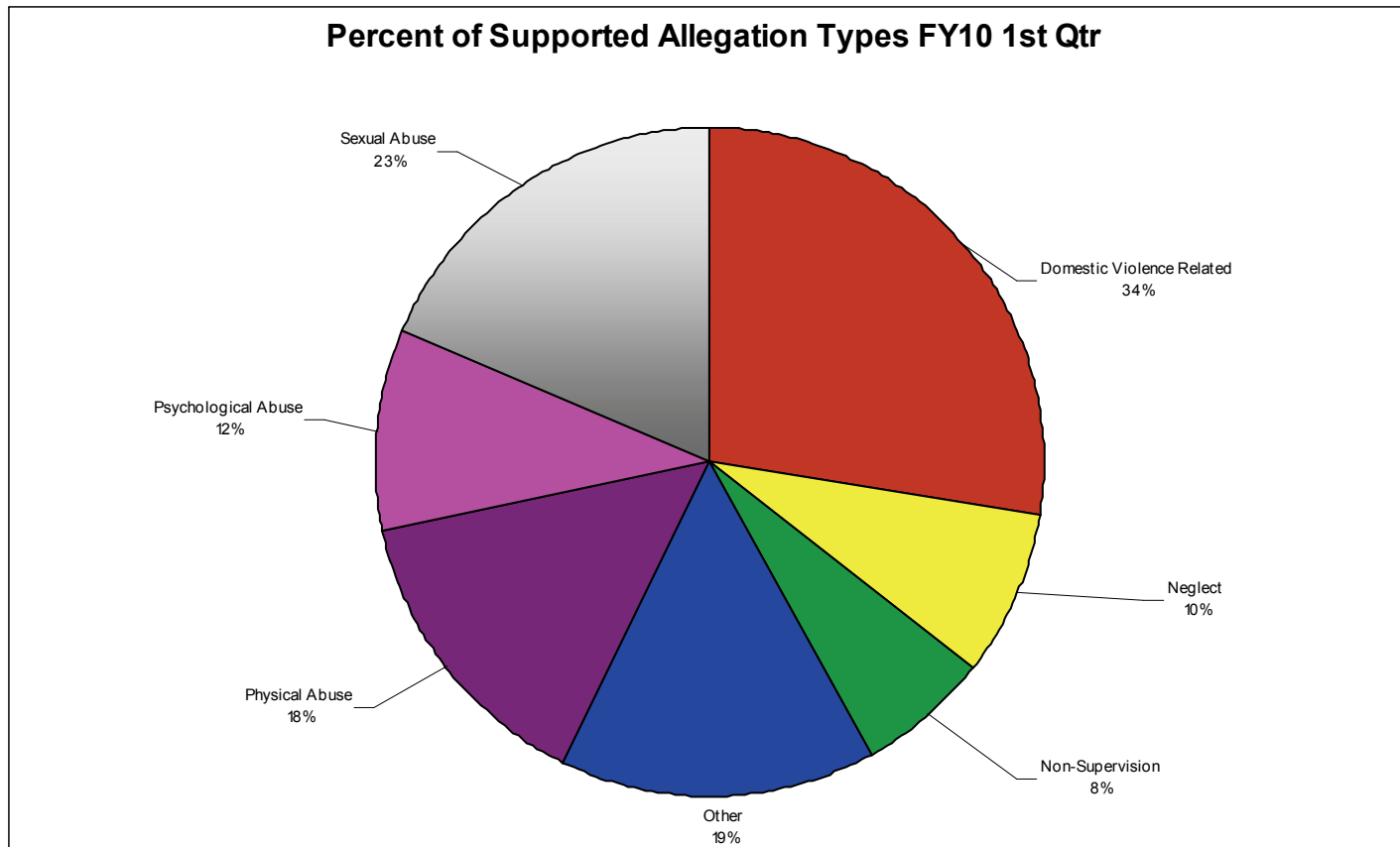
This chart shows the number of new CPS investigations received during the quarter based on the start date of the cases. The number of new CPS cases appears to be relatively stable.



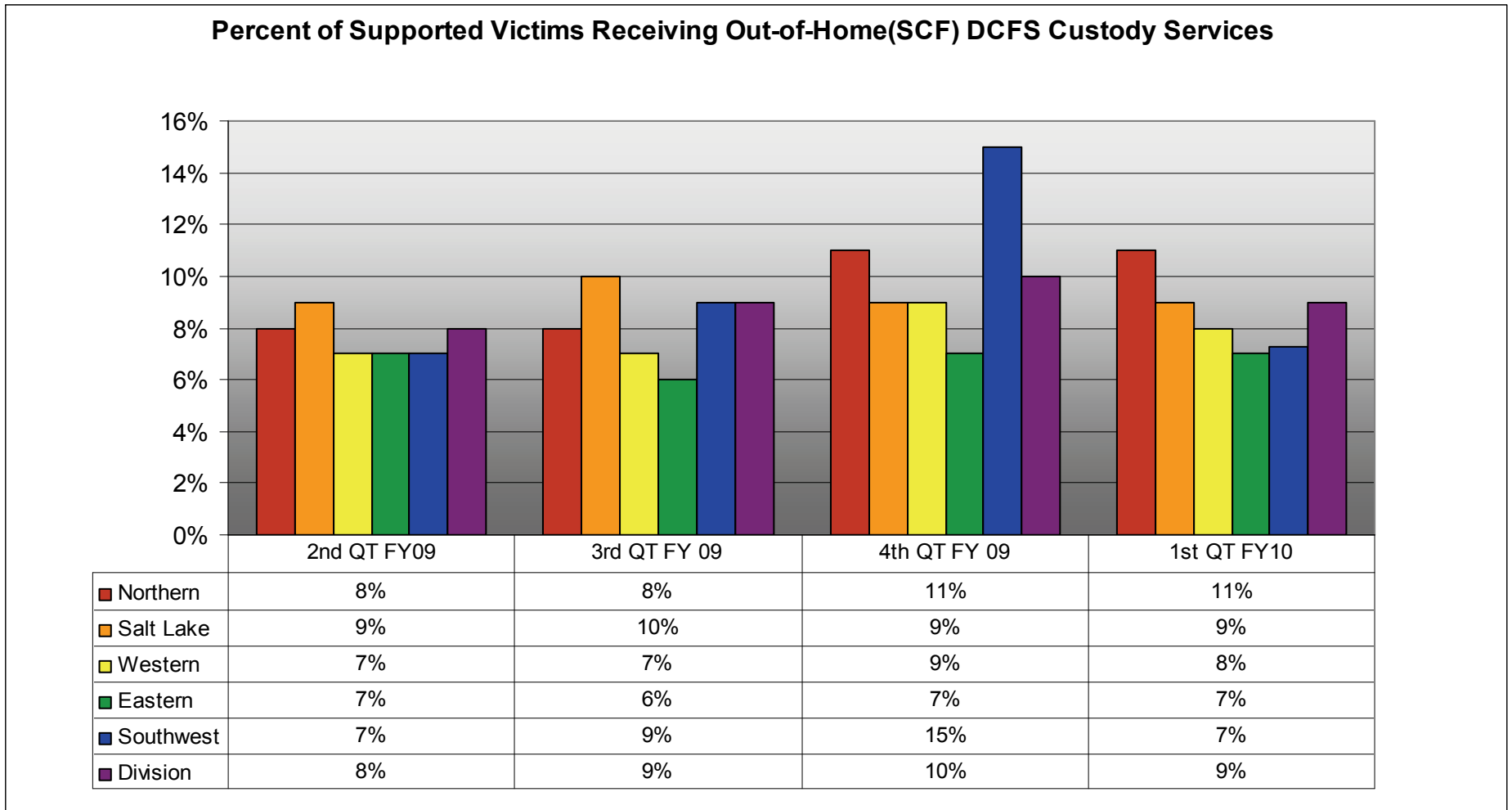
Child Maltreatment 2007 (federal report based on National Child Abuse and Neglect Data Systems data for 50 states) reports that for 25.2% of investigated reports, at least one child was found to be a victim of maltreatment with dispositions of supported, indicated, or alternative response victim. Utah's data below show a supported rate that is higher than the national average. There is a lot of state variability on what is accepted for investigation, and how abuse or neglect is defined. Utah's domestic violence related child abuse, out-of-home perpetrator abuse, and environmental neglect investigations may contribute to the higher supported rate.



Allegation types and definitions can be found in DCFS practice guidelines on the DCFS website. They have been grouped into main categories below. The most prevalent supported allegation type is Domestic Violence Related Child Abuse. The Other Category consists of allegations of dependency, failure to protect, safe relinquishment of a newborn child, and child endangerment. Note that because children may be victims of more than one type of abuse the percents add to more than 100%.

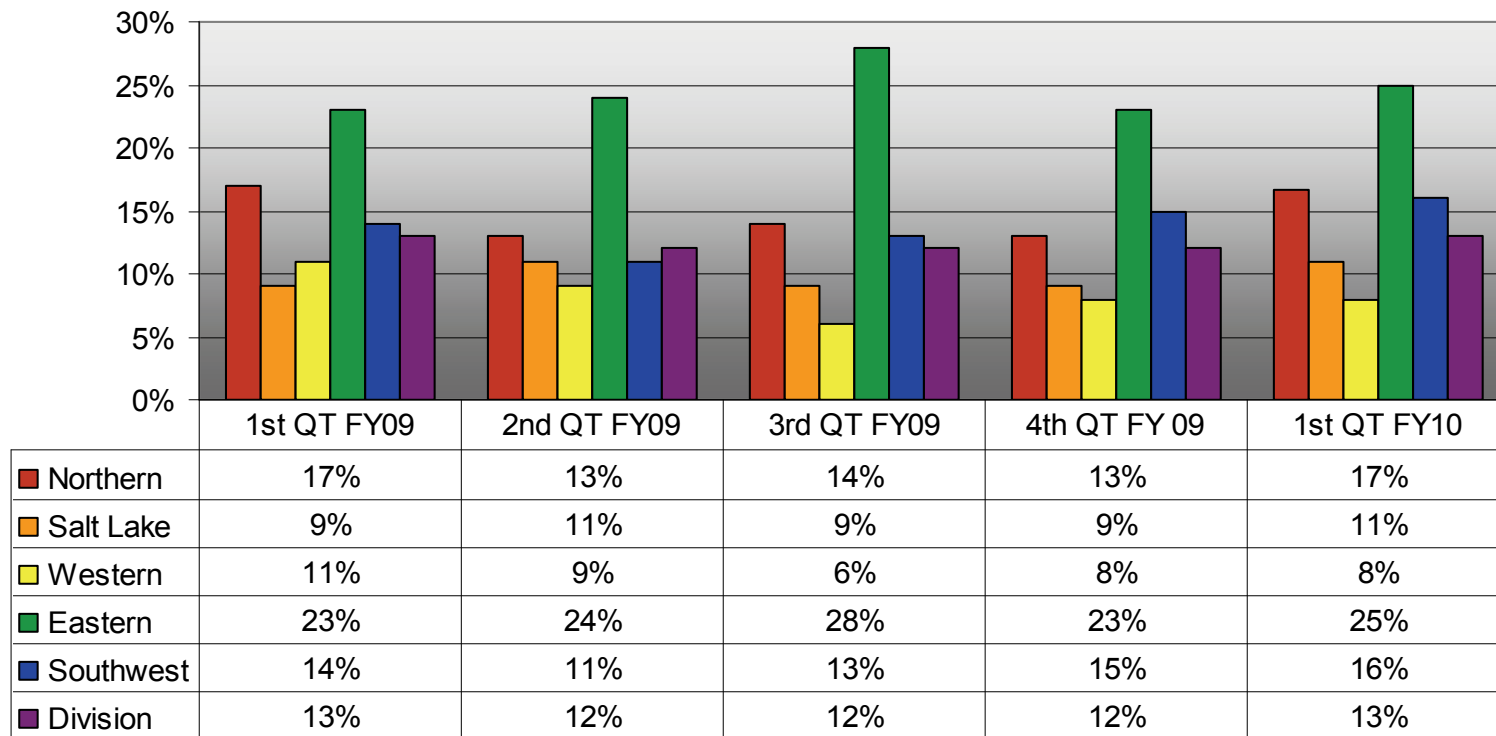


The chart below show the percentage of substantiated victims receiving ongoing out-of-home DCFS custody from the Division of Child and Family Services within 30 days of CPS case closure.



The chart below shows the percentage of substantiated victims receiving ongoing In-home services from the Division of Child and Family Services within 30 days of CPS case closure. In-home services include Protective Services Supervision (PSS), Protective Services Counseling (PSC), Protective Family Preservation (PFP), Protective Supervision Interstate (PSI), Clinical Counseling Services (CCS), and Counseling Individual Services (CIS). Clients who did not receive subsequent DCFS services may have been referred to community-based agencies.

**Percent of Supported Victims Receiving In-Home Services**

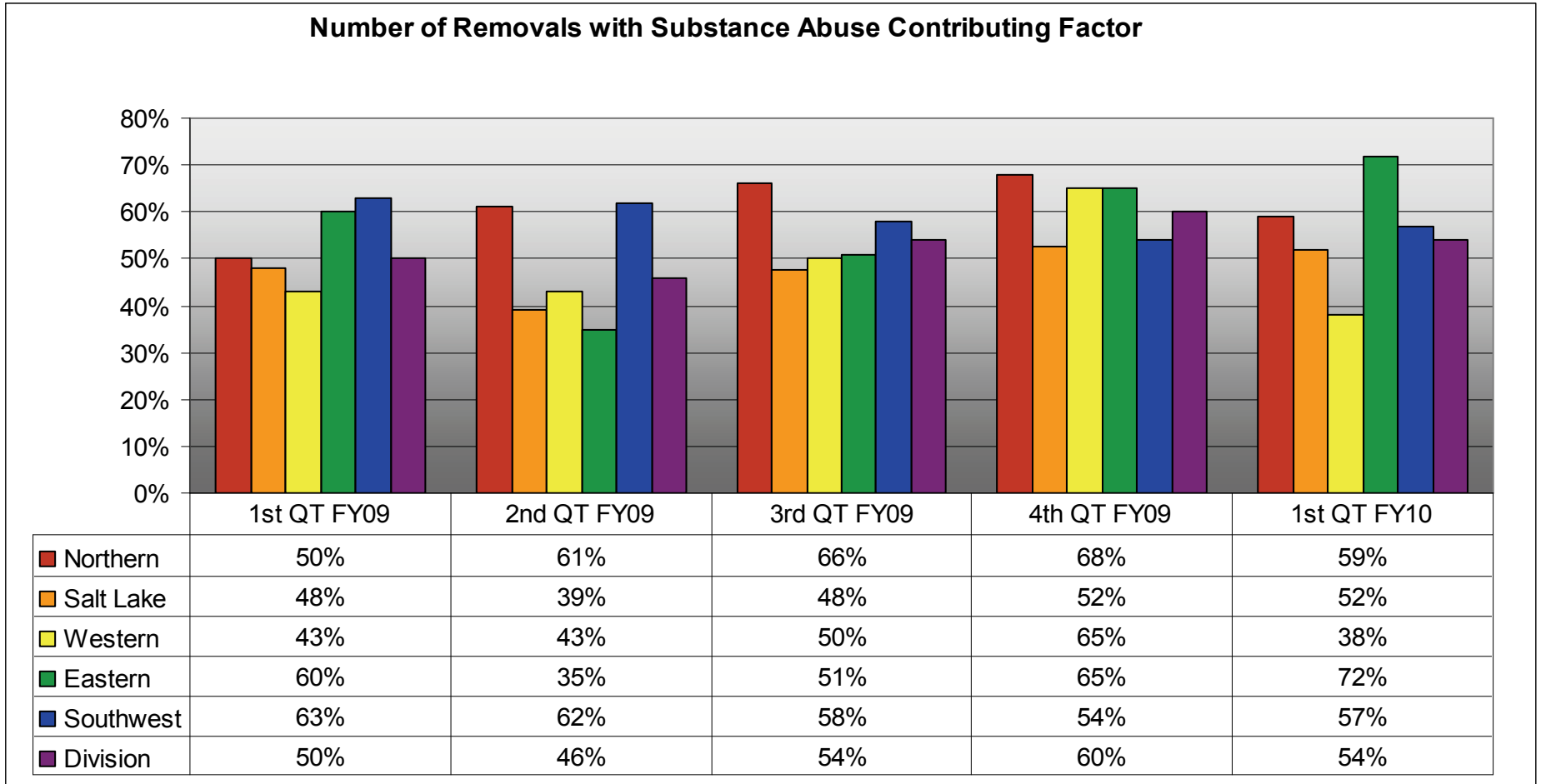


## Removal Information

Children may be placed into protective custody by a CPS worker during the course of an investigation, they may be removed or ordered into foster care as the result of an in-home case or a juvenile court hearing. The table below shows the number of children with removals recorded from the CPS cases, the total number of removals, and the number of new SCF cases opened during the time frame.

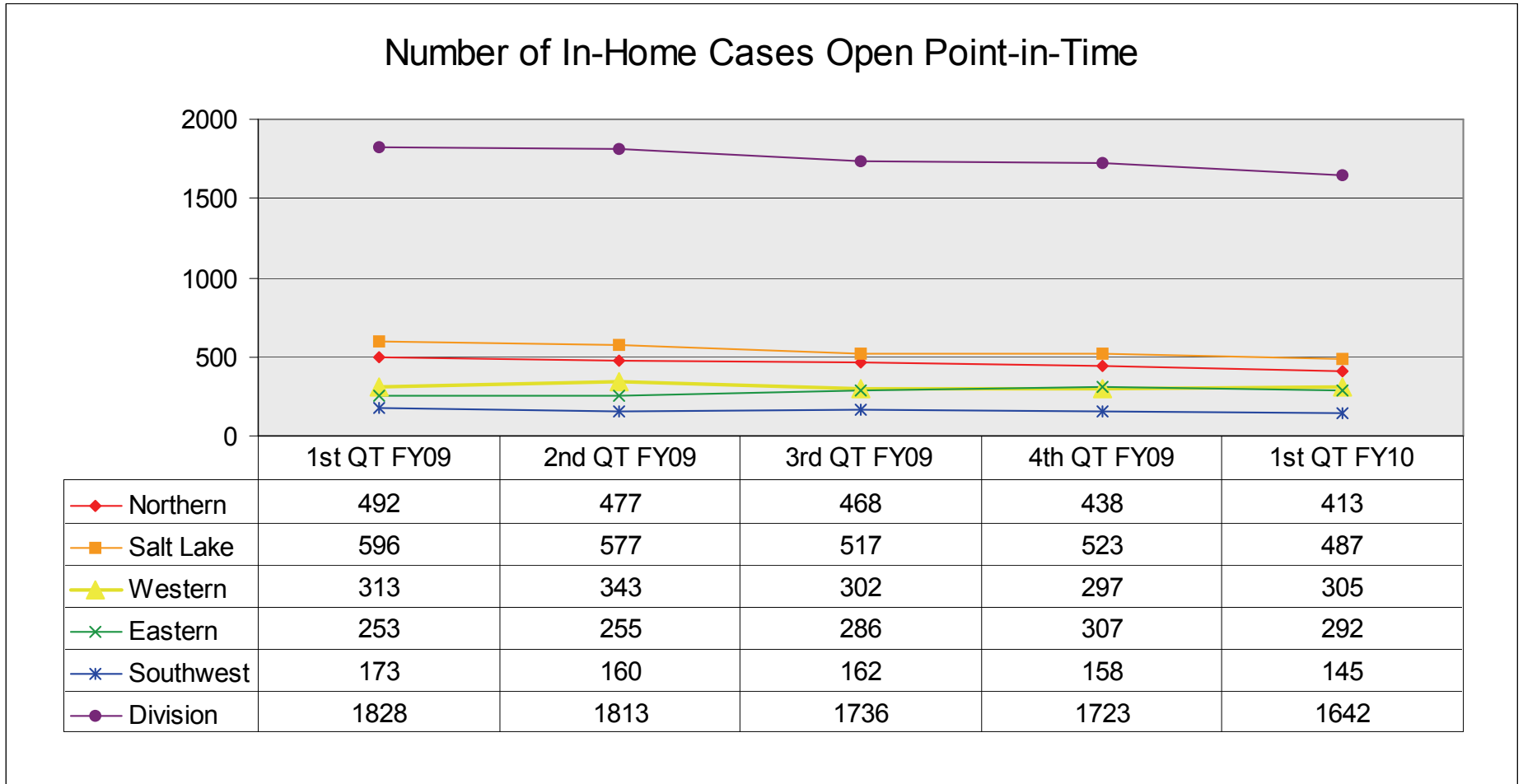
		1st QT FY09	2nd QT FY09	3rd QT FY09	4th QT FY 09	1st QT FY10
Northern	CPS Removal	49	55	69	53	54
	Total Removal	134	101	139	125	133
	New SCF	128	87	132	123	131
Salt Lake	CPS Removal	139	83	98	70	106
	Total Removal	245	176	216	183	198
	New SCF	224	161	204	171	181
Western	CPS Removal	26	37	49	36	38
	Total Removal	93	96	107	83	79
	New SCF	97	92	101	75	66
Eastern	CPS Removal	14	25	20	18	15
	Total Removal	48	55	51	48	50
	New SCF	50	44	44	42	49
Southwest	CPS Removal	51	18	29	38	36
	Total Removal	70	39	53	67	59
	New SCF	65	34	40	62	56
Division	CPS Removal	279	218	265	215	250
	Total Removal	590	467	566	506	519
	New SCF	561	418	517	473	483

The chart below shows the percent of total removals where there was a case contributing factor of drug abuse, alcohol abuse, fetal drug addiction, or fetal alcohol.



## In -Home Information

The data below show the number of in-home cases open on the last day of each quarter.



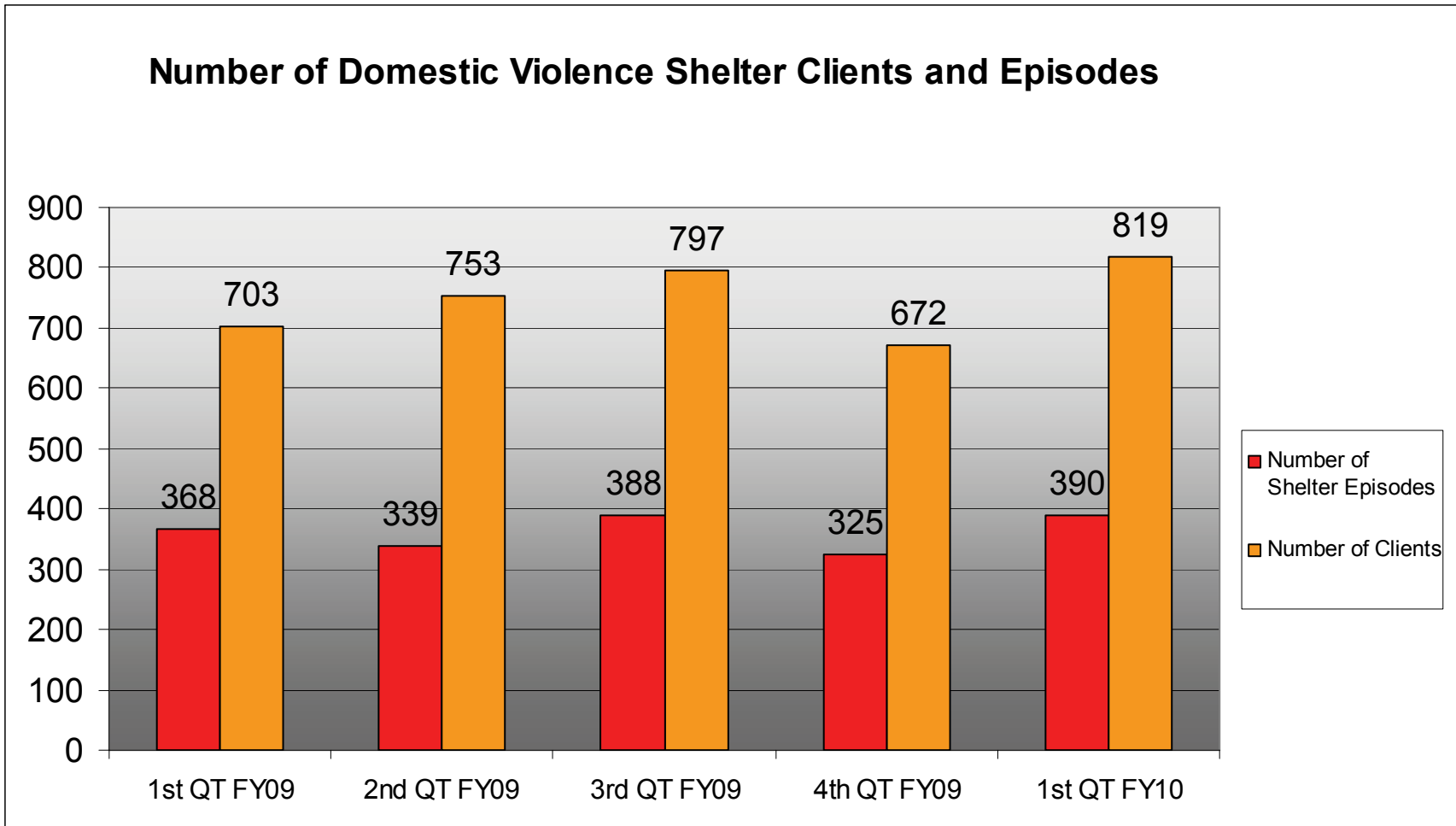
The table below shows the number of in-home cases served during the most recent quarter by case type. The table shows the variability in use of in-home codes across regions. In-Home services include: Clinical Counseling Services (CCS), Counseling Individual Services (CIS), Independent Home Study (IHS), Post Adoptive Treatment (PAT), Protective Family Preservation (PFP), Family Reunification (PFR), Protective Services Counseling (PSC), Protective Supervision Interstate (PSI), and Protective Services Supervision (PSS).

### 1st Qtr FY10

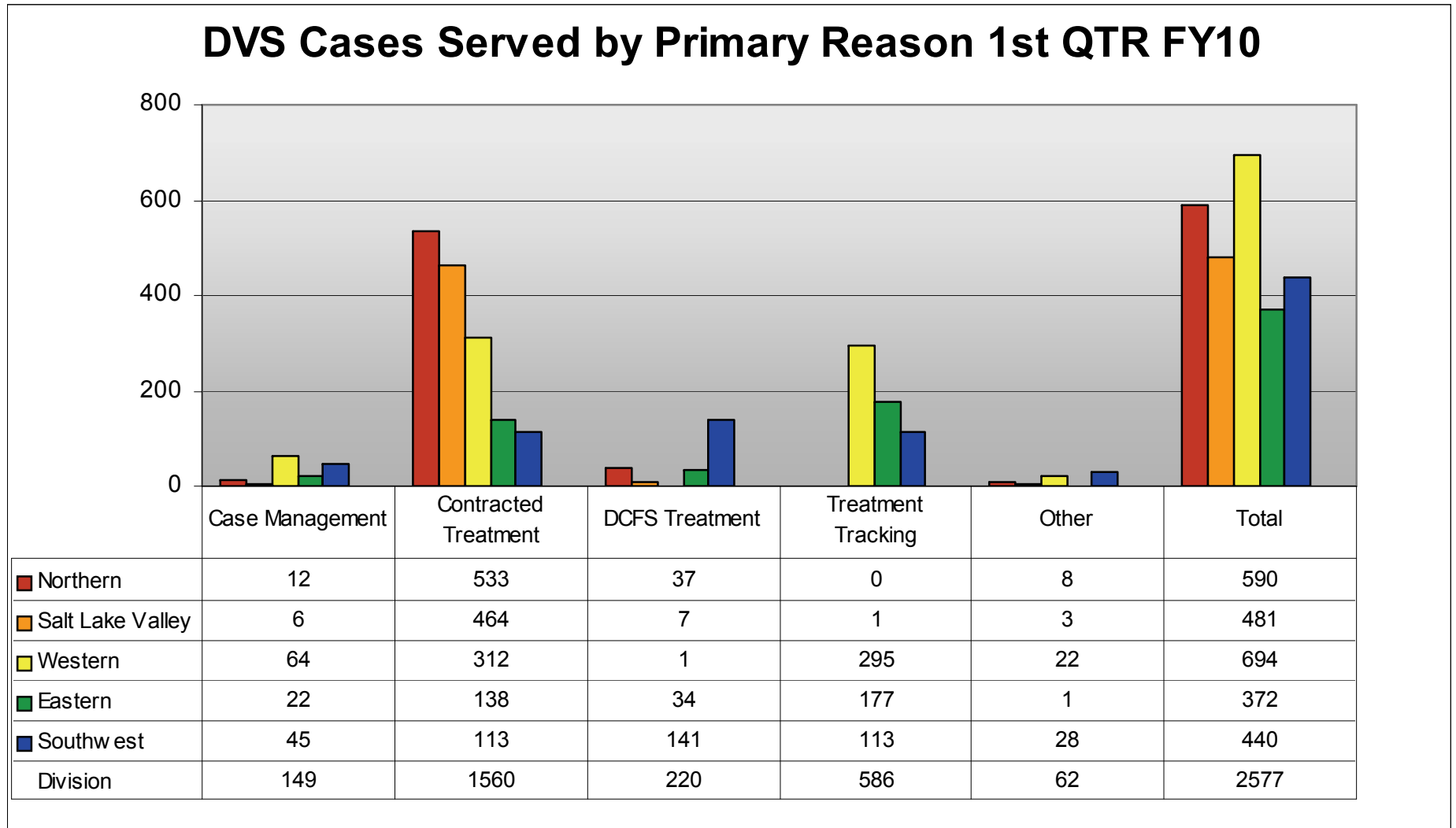
	CCS	CIS	IHS	PAT	PFP	PFR	PSC	PSI	PSS
Northern	9	52	150	12	35	1	35	14	395
Salt Lake	1	4	319	40	114	30	113	26	269
Western	12	13	162	34	4	0	6	14	227
Eastern	84	59	60	2	27	1	49	10	189
Southwest	0	17	64	6	0	0	21	11	119
Division	106	145	755	94	180	32	224	75	1199

## Domestic Violence

The chart below shows the number of clients served in domestic violence shelters statewide. Clients with multiple episodes may be counted more than once. The figures below includes both adult and child victims.

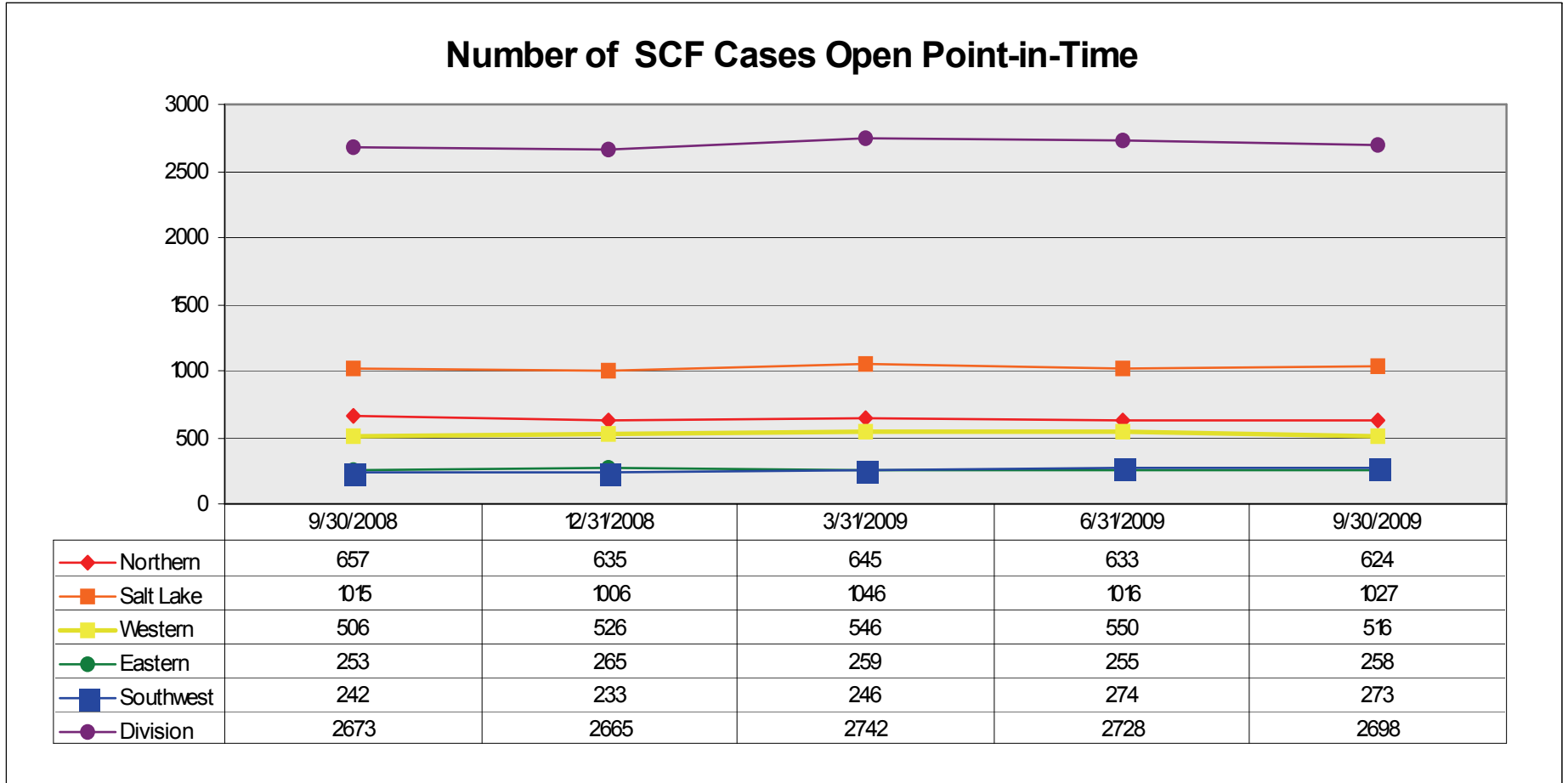


DCFS modified the case primary reason values in April 2007 to differentiate between types of DVS cases. The “Other” category below are those cases that do not yet have one of the newer primary reason values. The data unit and the DV program area manager have been working with the regions to update all of these values on older cases.

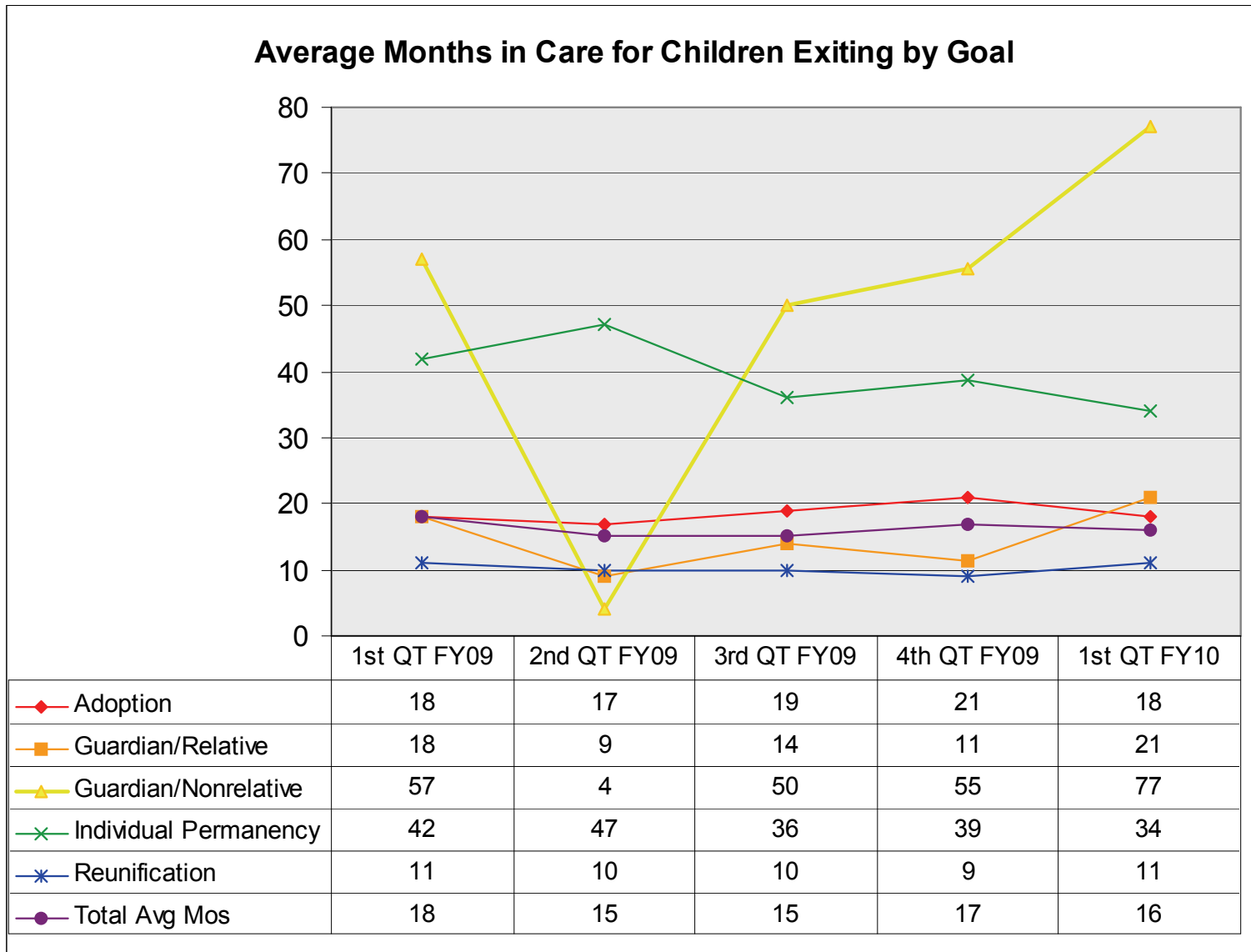


## Foster Care Information

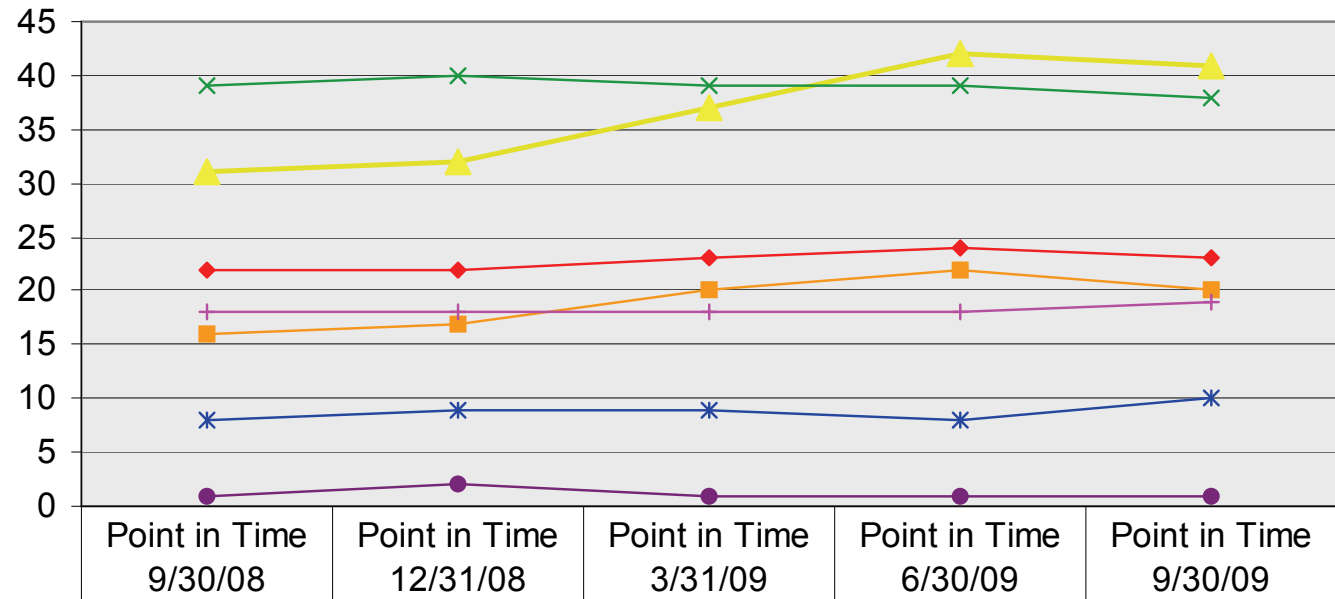
The chart below shows the number of open SCF cases on the last day of each quarter by Region. The number of children receiving foster care services has remained fairly stable during the last year.



Data on goals and average months in care are included below. Data on closed cases are provided to examine length of time to exit. Data on open cases on the next page are included to examine differences between exit cohorts and children who remain in care, in other words, to determine if there is a population who is remaining in care for long periods of time that are not reflected in the exit cohort information. A blank indicates there were no exits with that goal in the quarter.



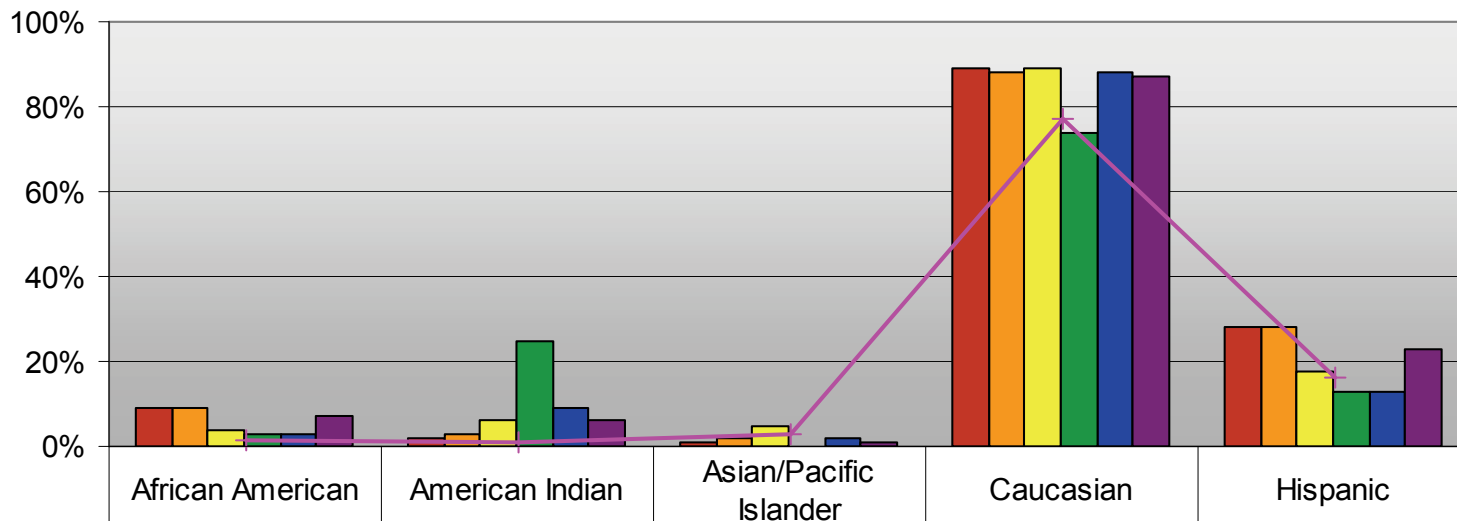
## Average Months in Care for Children in Open Cases by Goal



◆ Adoption	22	22	23	24	23
■ Guardianship - Relative	16	17	20	22	20
▲ Guardianship - Nonrelative	31	32	37	42	41
× Individualized Permanency	39	40	39	39	38
* Reunification	8	9	9	8	10
● Goal not yet established	1	2	1	1	1
+ Average overall	18	18	18	18	19

The information below shows the percentage of foster children by ethnicity as compared to the state child population percentages. SAFE allows for recording of multiple ethnicities so percentages may add to more than 100%. The state shows disproportionality in African American children in custody, American Indian children, and Hispanic children. Much research has been conducted nationally on the phenomenon of disproportionality in child welfare and has determined there are multiple factors that contribute, DCFS administration is working with a local university to examine disproportionality at different points in the system.

### Ethnicity of Foster Children 9/30/09

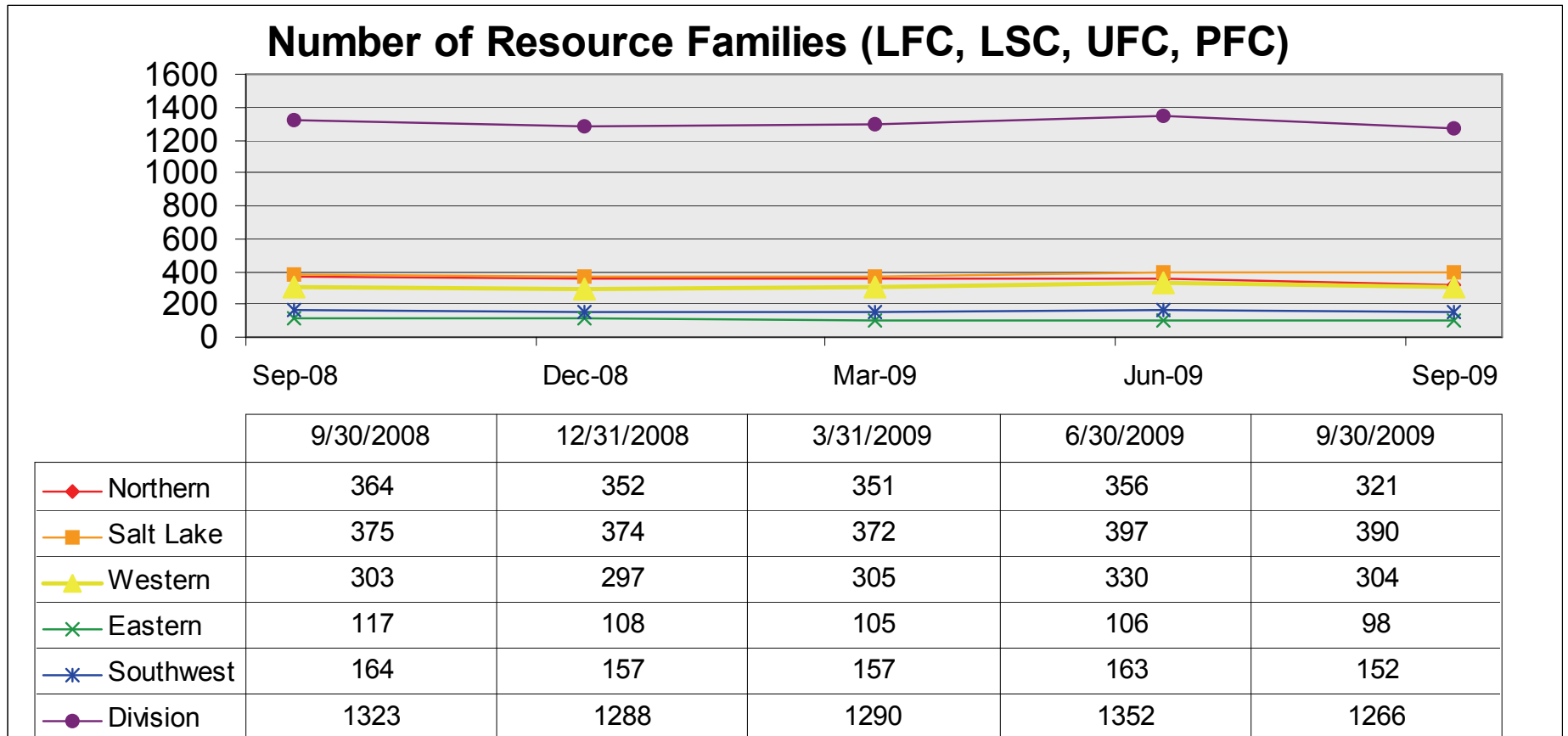


	African American	American Indian	Asian/Pacific Islander	Caucasian	Hispanic
Northern	9%	2%	1%	89%	28%
Salt Lake	9%	3%	2%	88%	28%
Western	4%	6%	5%	89%	17%
Eastern	3%	25%	0%	74%	13%
Southwest	3%	9%	2%	88%	13%
Division	7%	6%	1%	87%	23%
Population*	1%	1%	3%	77%	16%

\*population based on 2008 census estimate

## Provider Information

Below is information on providers with License types of Licensed Foster Care (LFC), Licensed Specific Care (LSC), Ute Foster Care (UFC), and Paiute Foster Care (PFC).



Ethnicity of Foster Parent providers licensed foster care (LFC), specified relative (LSC), Ute (UFC), and Paiute (PFC) are in the table below.

