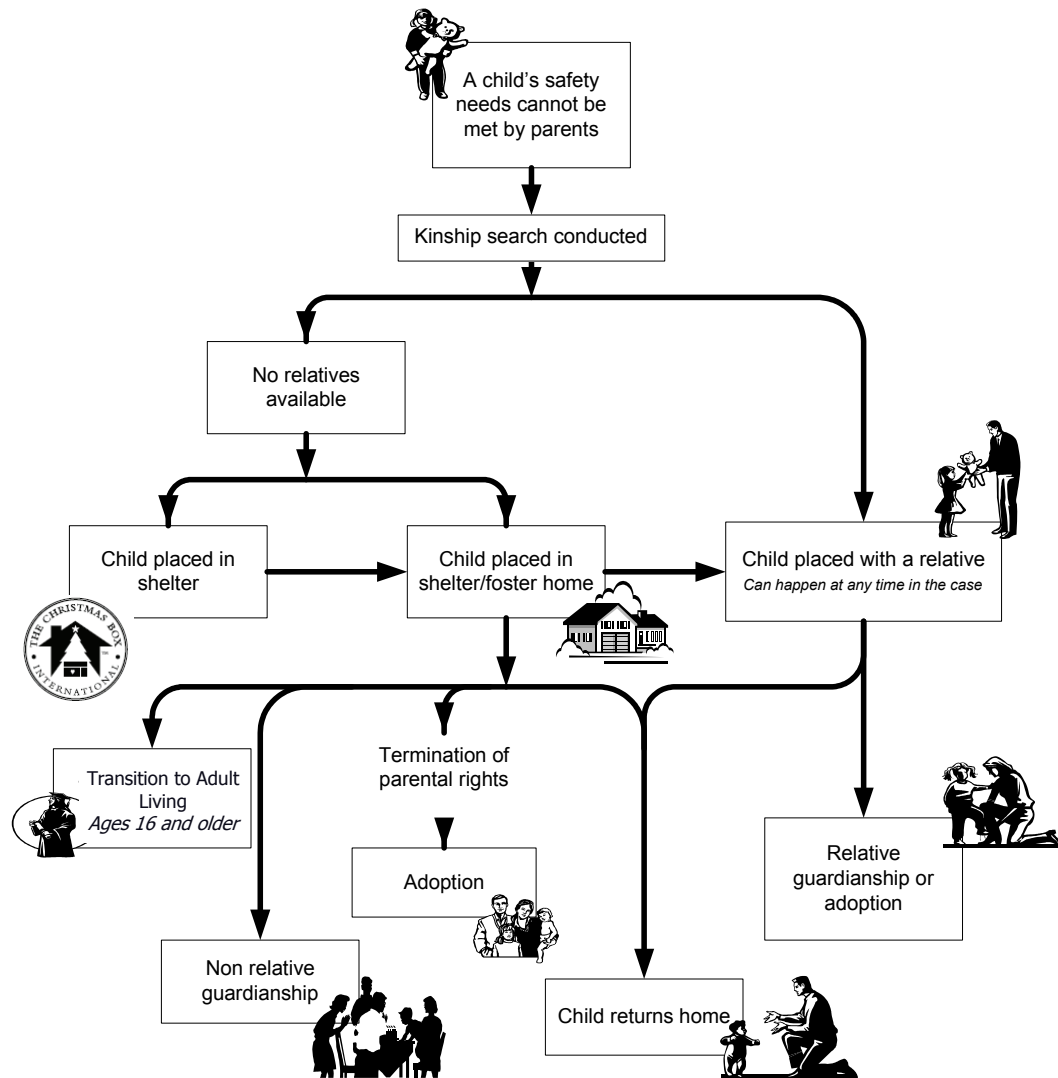


The Protective Custody Process

Protective custody is a process exercised when the risk for further abuse is high at home, the child cannot be protected from maltreatment while in the home and/or not enough safety and protection factors are in place to prevent further harm to the child. Within 24 hours of removal, a multi-disciplinary staffing is held to assess needs, protections, goals and kinship care availability. In addition, a DCFS caseworker, Guardian Ad Litem (GAL), Nurse and Family and Child Service Team is established for each child.



QUICK FACTS

- 2,673 children were in state custody on the last day of the year
- 10% of child victims were placed in foster care for their safety
- The average length of stay in foster care for children exiting was 16 months
- All children in state custody have a nurse assigned to them

